

LITTLE VILLAGE COMMUNITY CENTER

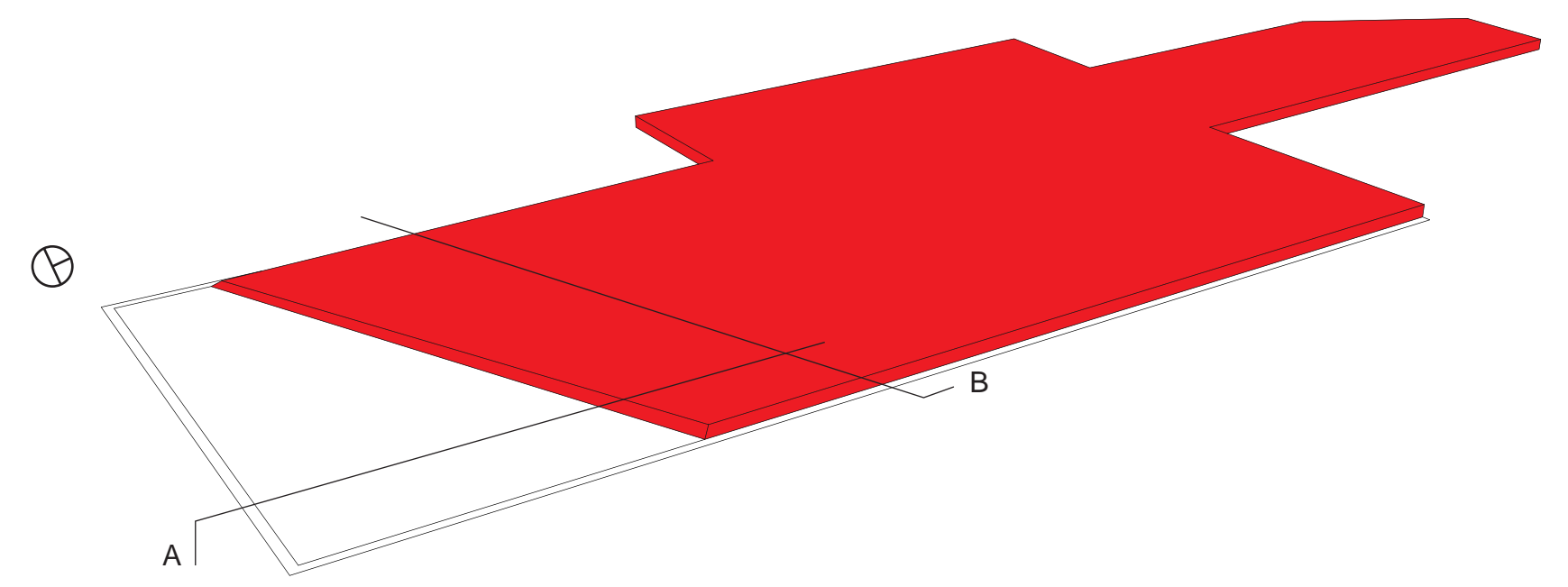
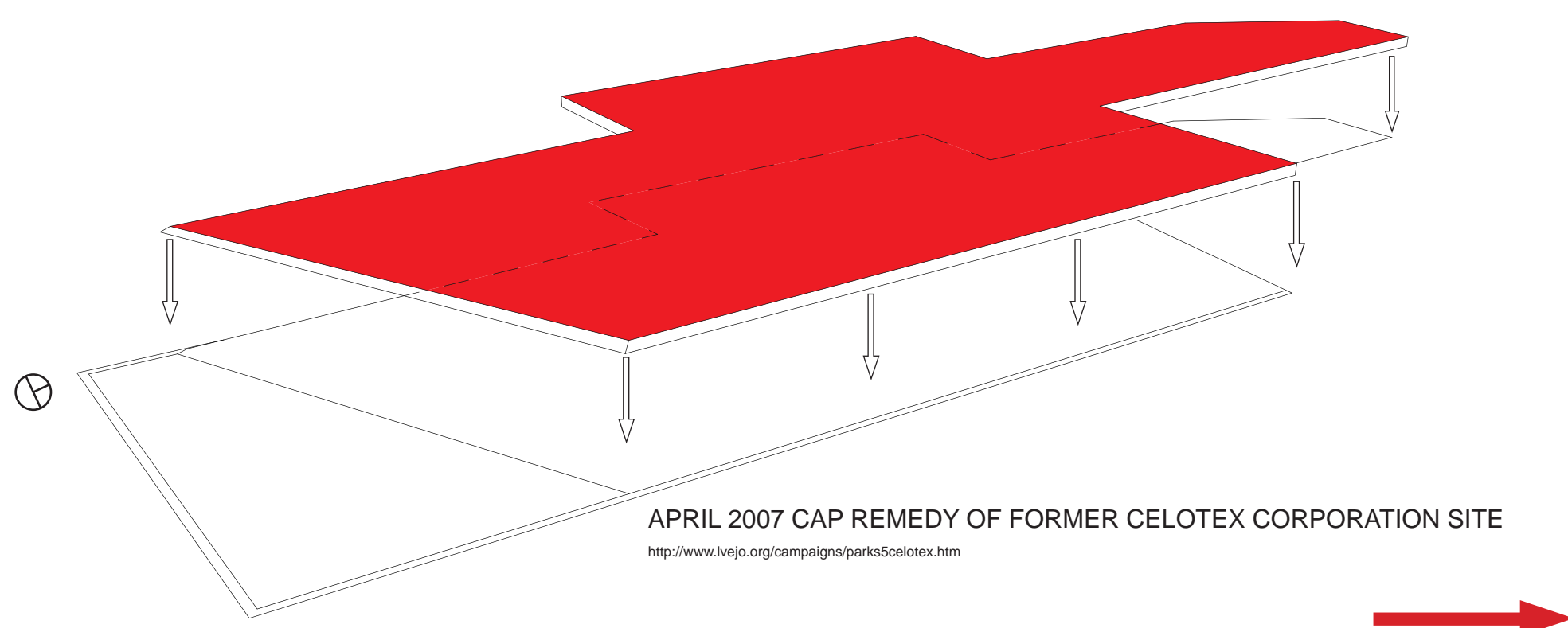


Total Retail (Per Sq. Mi.):
 \$\$\$ Little Village: \$143,230,146
 \$\$ Cermak: \$121,045,291
 \$ Pilsen: \$115,536,397

Median Age (Yrs):
 👤 Little Village: 26
 👤 Chicago: 32

<http://www.census.gov/>
<http://www.lavillachamber.org/>

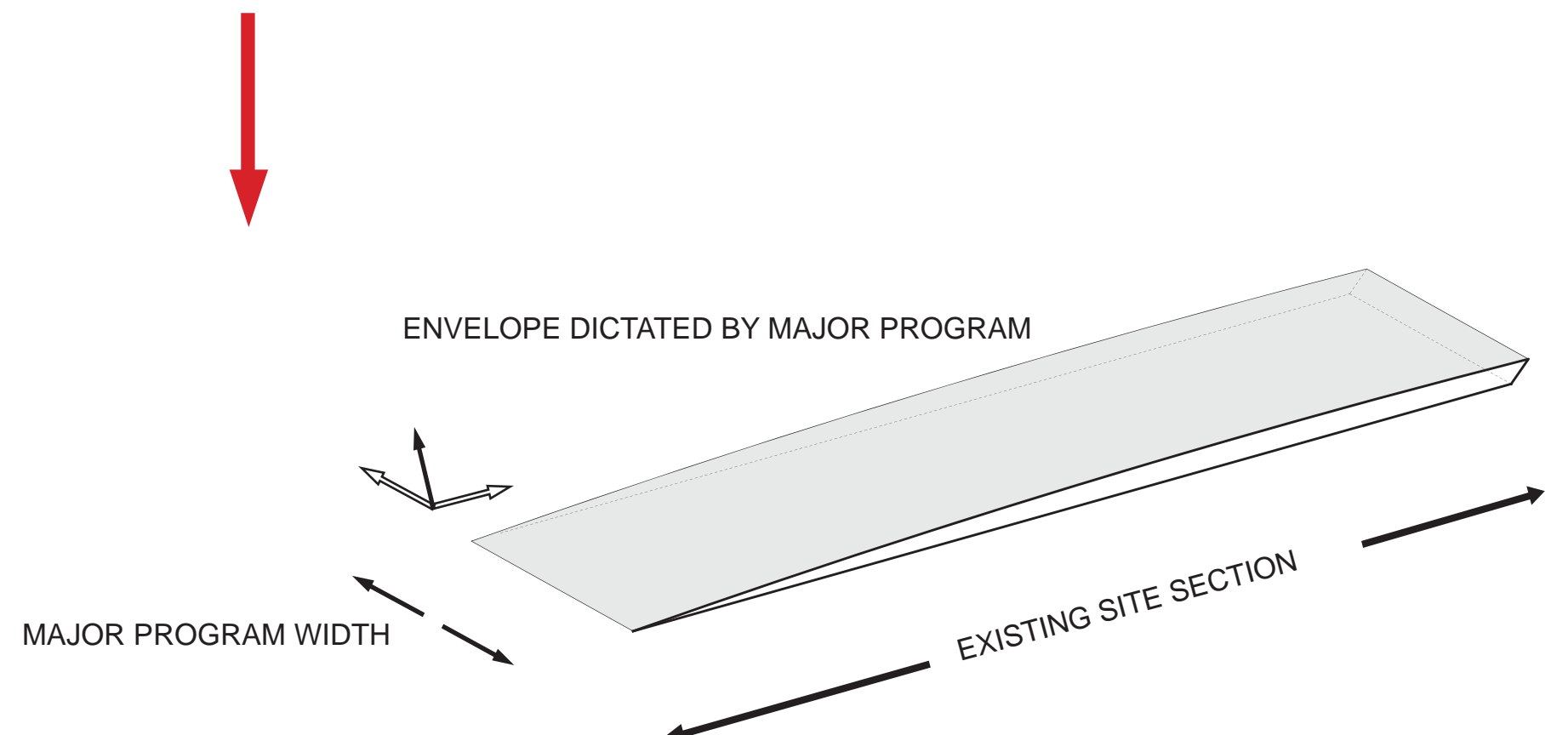
LITTLE VILLAGE COMMUNITY CENTER EXISTING SITE



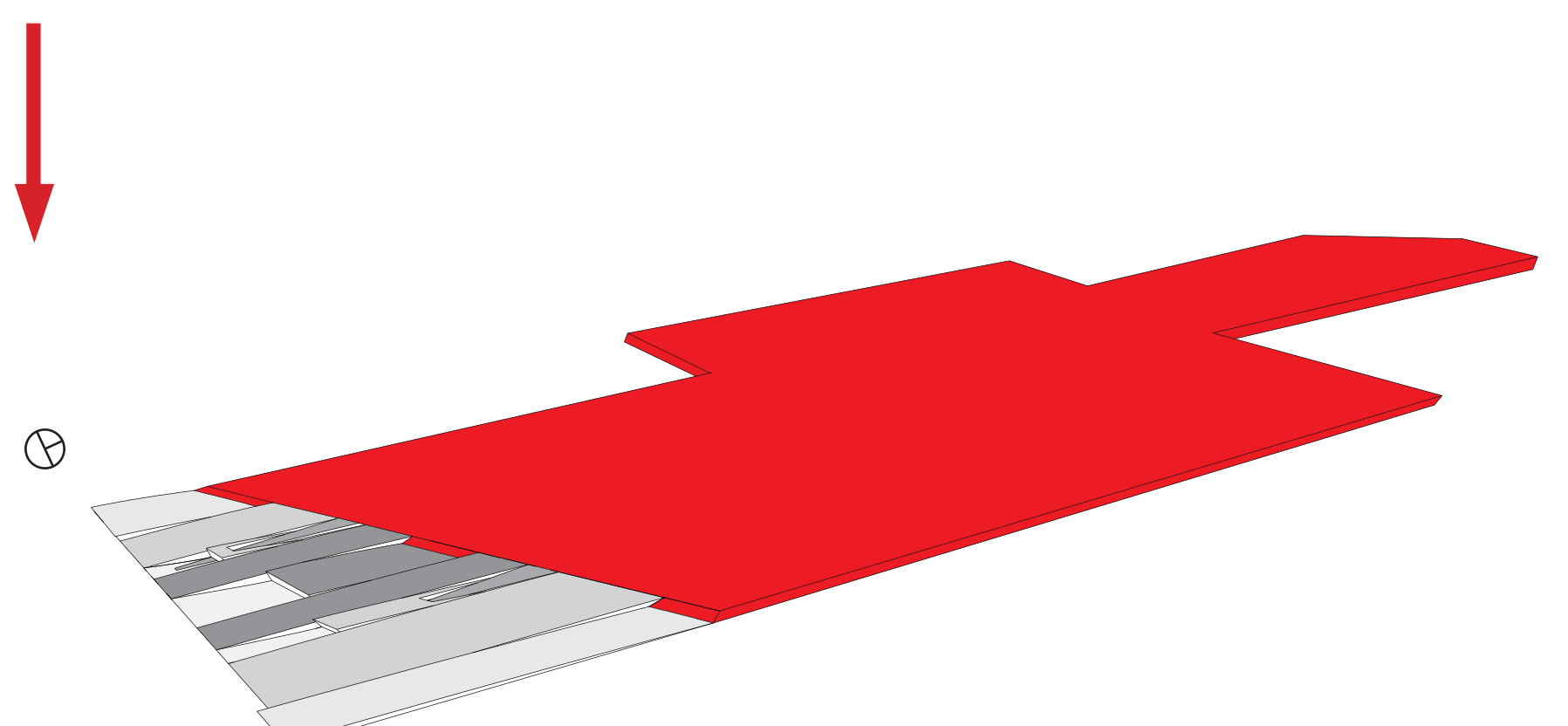
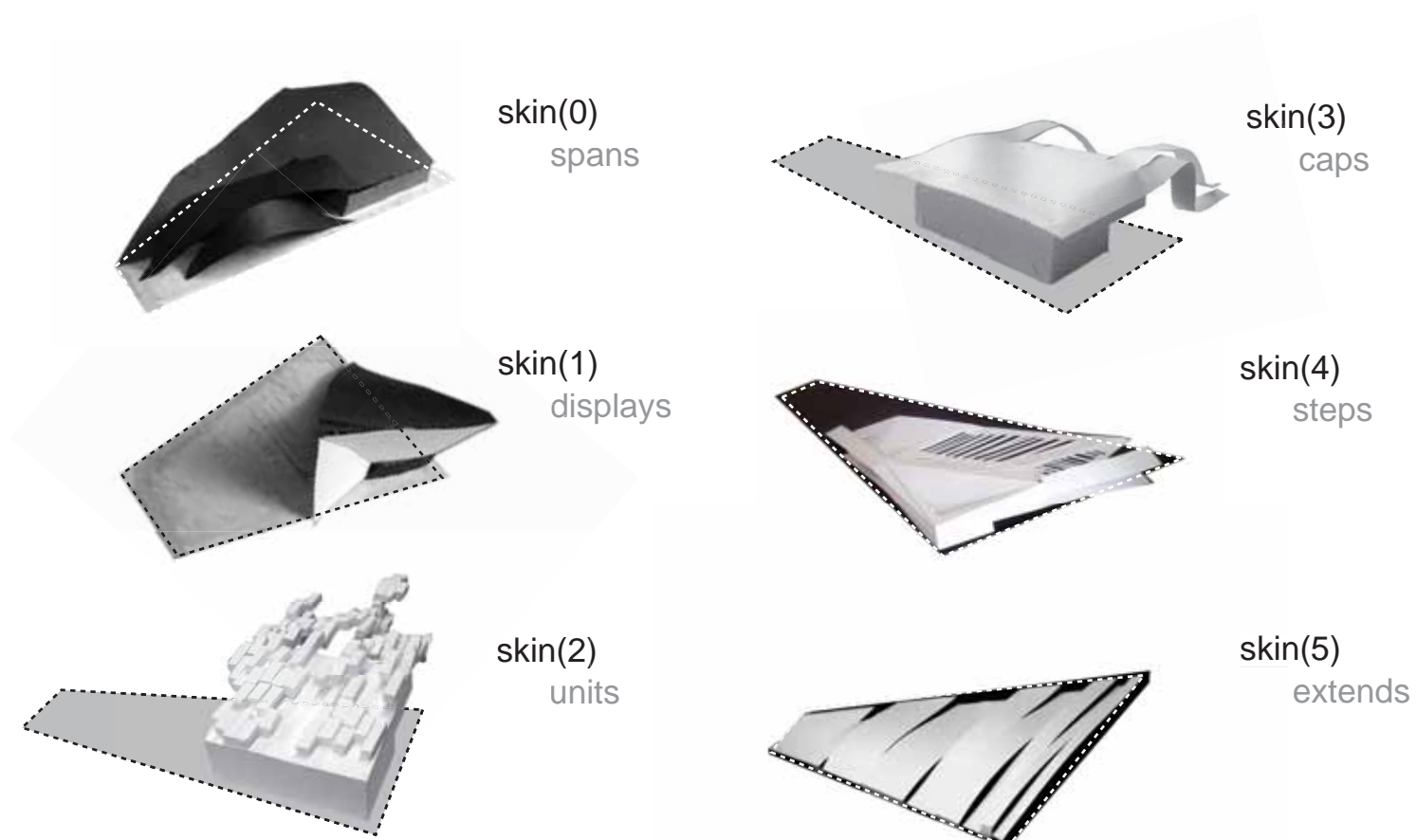
UNIQUE EXISTING SITE SECTION INTERPOLATED



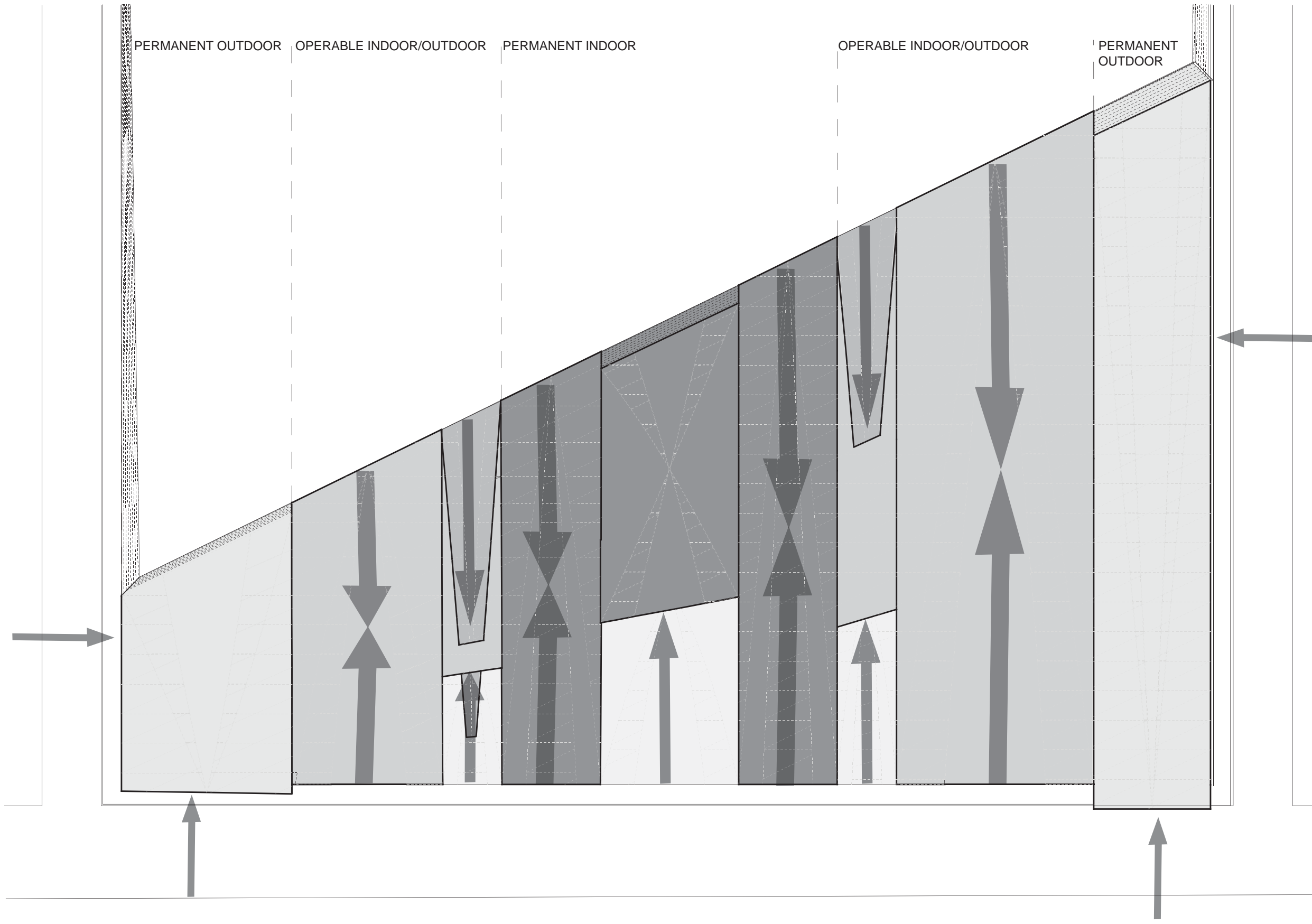
MAJOR PROGRAM WIDTH REQUIREMENTS



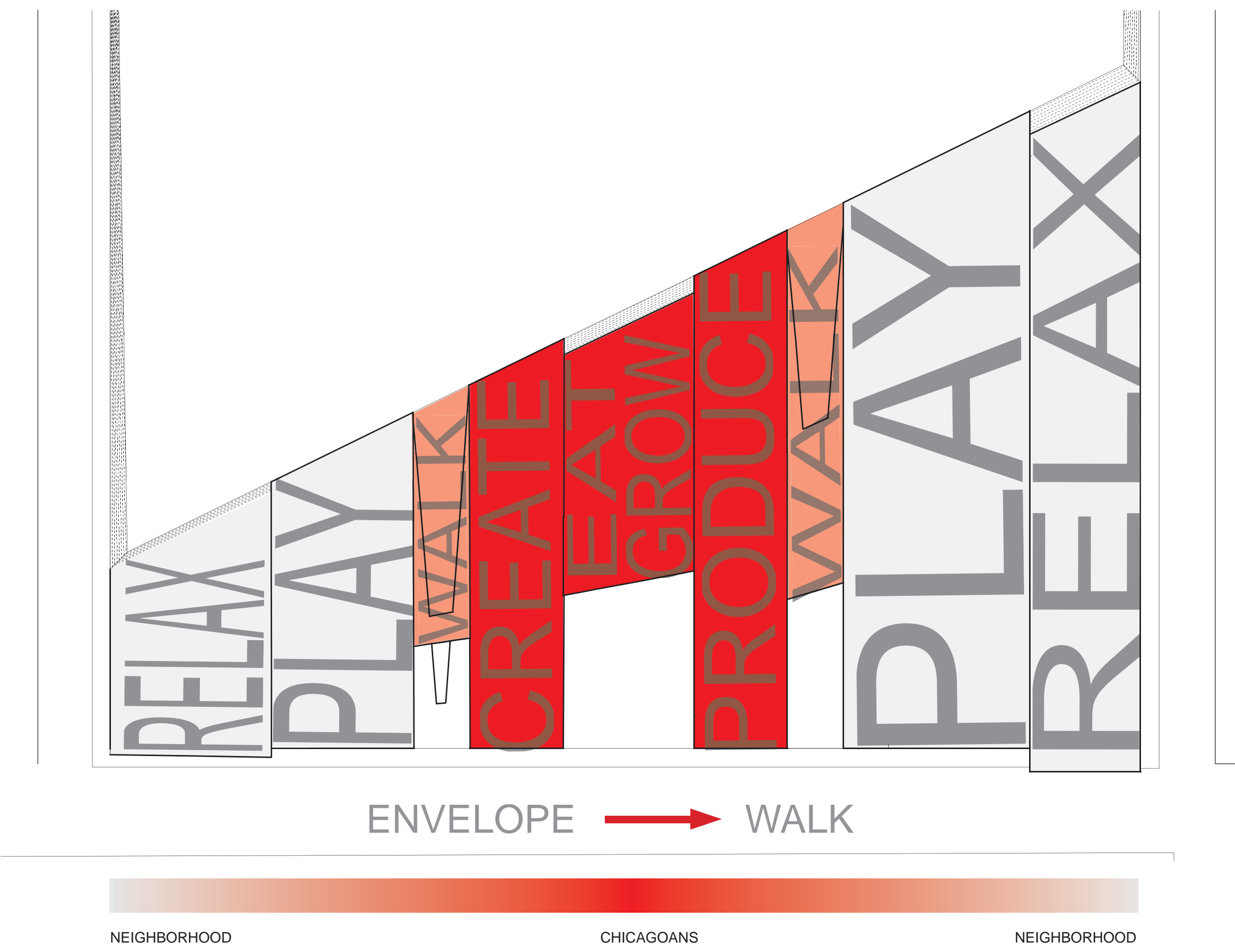
ITERATIONS



ENVELOPE REQUIREMENTS AND EXTERIOR CIRCULATION



PROGRAMMATIC ACTIONS

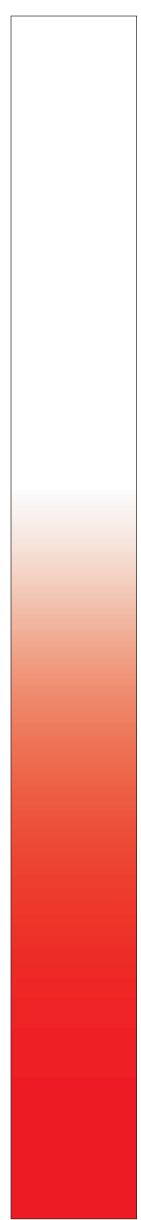


PROGRAM CATALOG

PROGRAM POPULATIONS

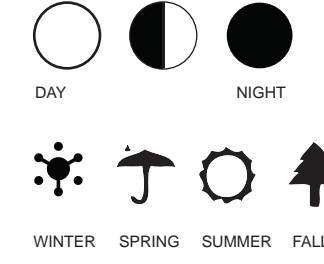
NEIGHBORHOOD

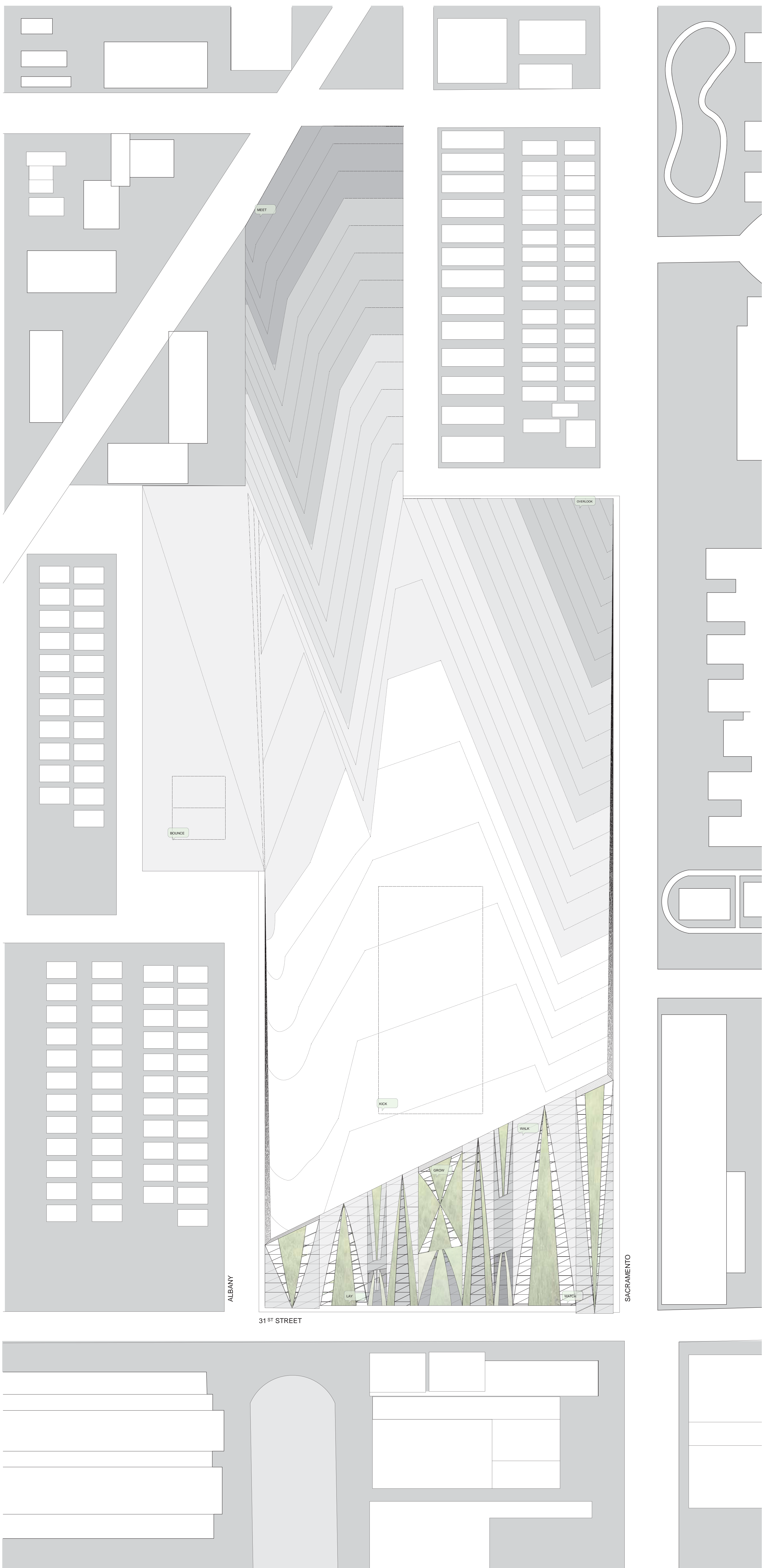
CHICAGOANS



PROGRAM	ENVELOPE	OCCUPANCY	VOLUME	TEMPORALITY	
RELAX	Event Space	sheltered acoustically-sound	> 100	>200 sq. ft	☾ ☂ ☉ 🌳
	Terrace	indoor/outdoor	> 100	> 200 sq. ft	☾ ☂ ☉ 🌳
PLAY	Basketball Court	high-impact flooring well ventilated	> 100	28 m x 15 m	☉ ☂ ☉ 🌳
	Soccer Field	turf, subsoil drain level ground	> 100	100 yd x 60 yd	☉ ☂ ☉ 🌳
	Multi-Purpose Gym	high impact flooring well-ventilated	> 100	90 ft x 200 ft	☾ ☂ ☉ 🌳
	NCAA Swimming Pool	heavily ventilated moisture protected	>100	25 m x 25 yd	☾ ☂ ☉ 🌳
	Locker Rooms	heavily ventilated	30	40 ft x 20 ft	☾ ☂ ☉ 🌳
CREATE	Recording Studio	acoustically sound	10	20 ft x 20 ft	☾ ☂ ☉ 🌳
	Artist Studio	natural lighting	20	20 ft x 20 ft	☾ ☂ ☉ 🌳
PRODUCE	Gallery	public views natural lighting	20	20 ft x 20 ft	☾ ☂ ☉ 🌳
	Market Stand	storefront public views	10	20 ft x 20 ft	☾ ☂ ☉ 🌳
	Media Lab	acoustically sound	20	20 ft x 20 ft	☾ ☂ ☉ 🌳
EAT	Cafe	connection to public connection to street	50	70 ft x 30 ft	☾ ☂ ☉ 🌳
GROW	Green House	heavily ventilated	10	50 ft x 100 ft	☉ ☂ ☉ 🌳

TEMPORAL USE:

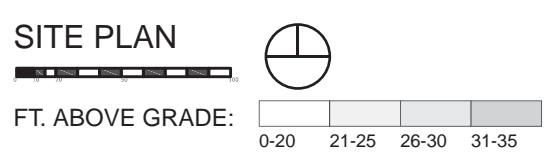




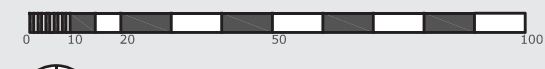
ALBANY

SACRAMENTO

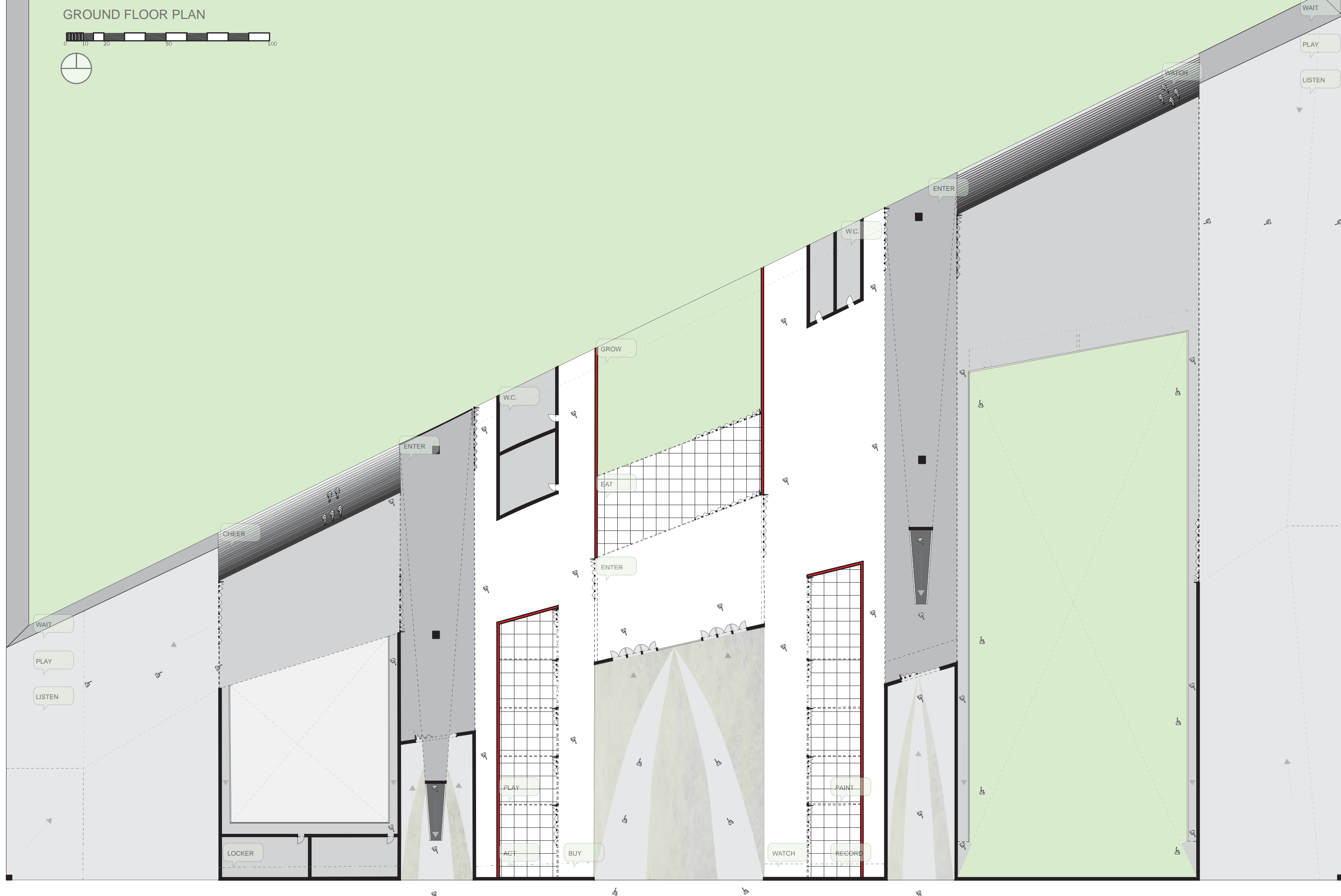
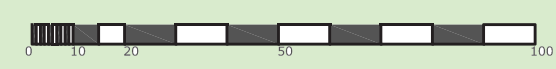
31ST STREET



PLAN -20 FEET



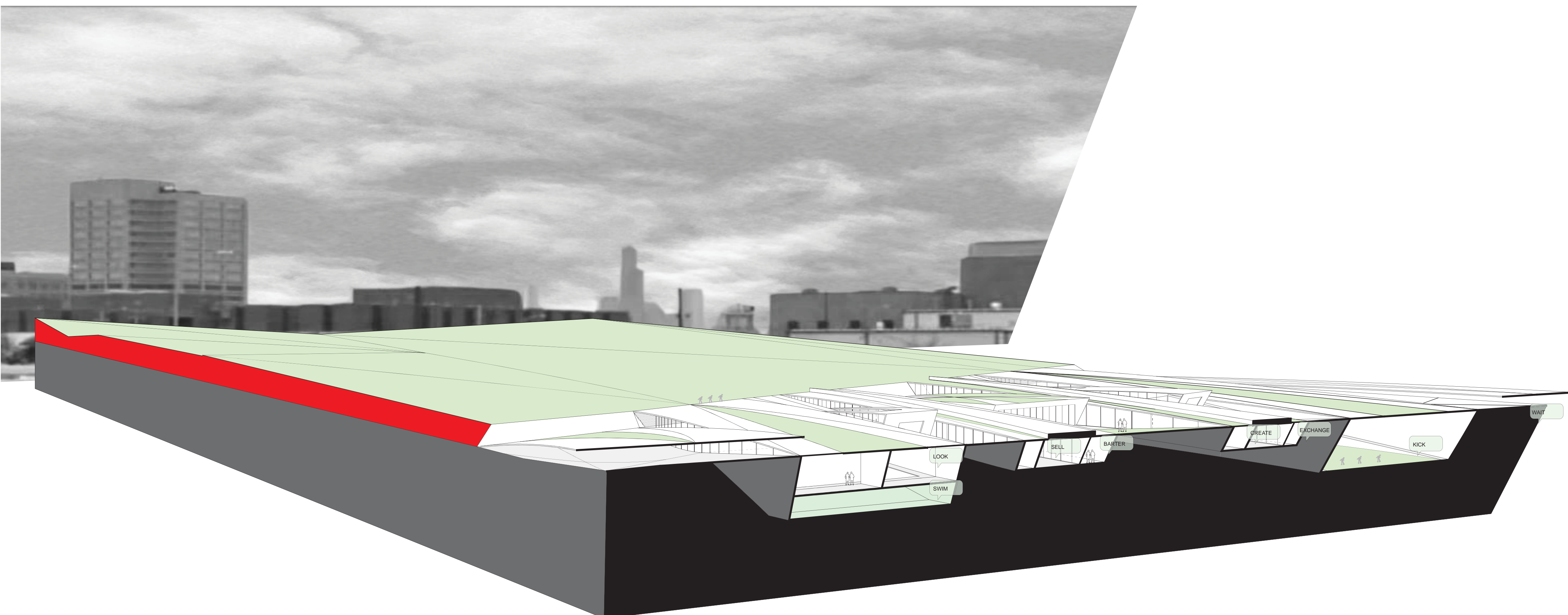
GROUND FLOOR PLAN




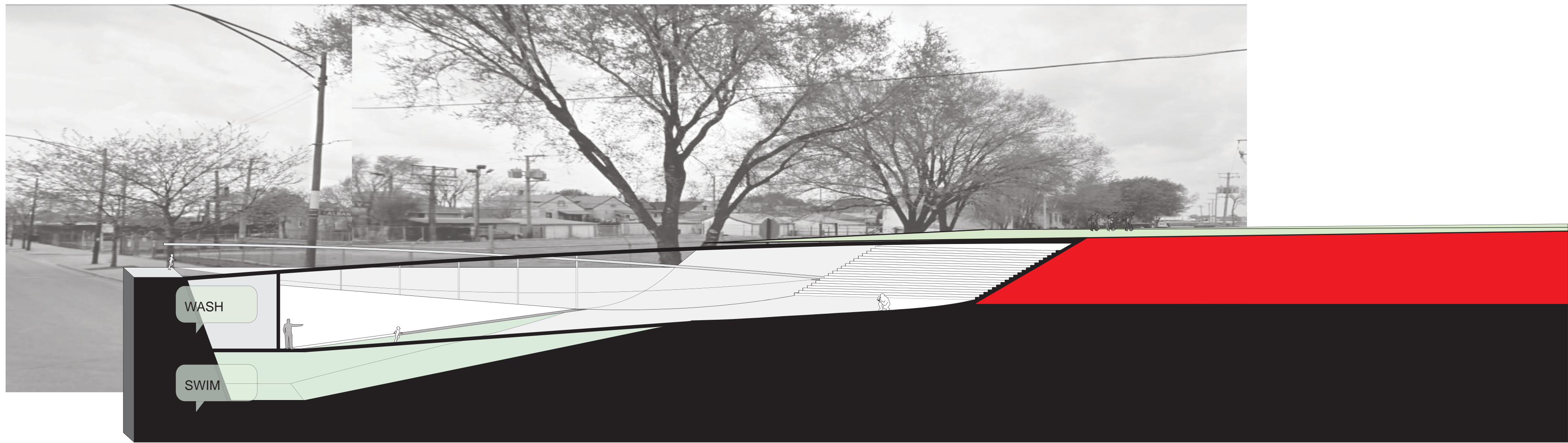
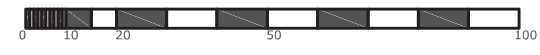
ALBANY

31ST STREET

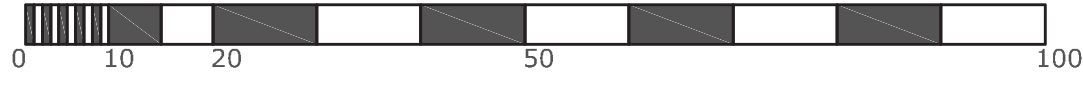
SACRAMENTO

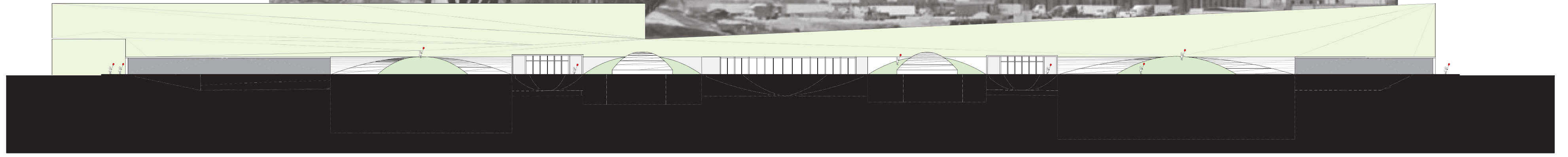


SECTION LOOKING NORTH EAST 

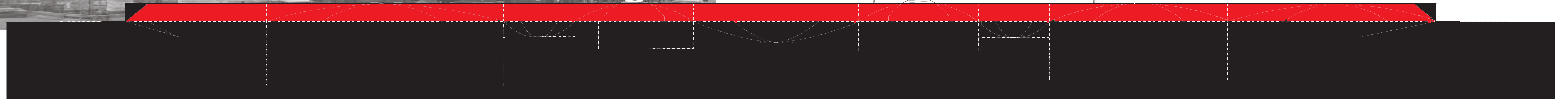
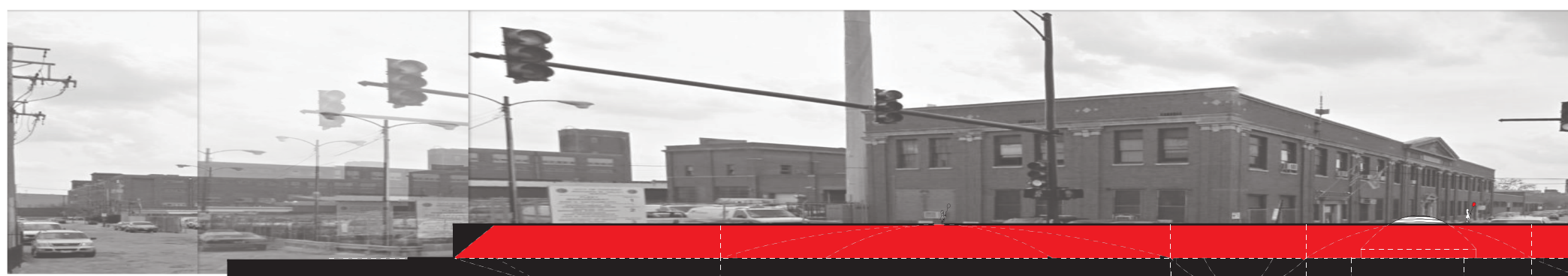
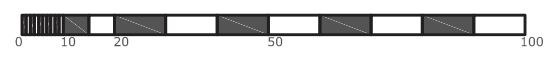


SECTION LOOKING WEST 

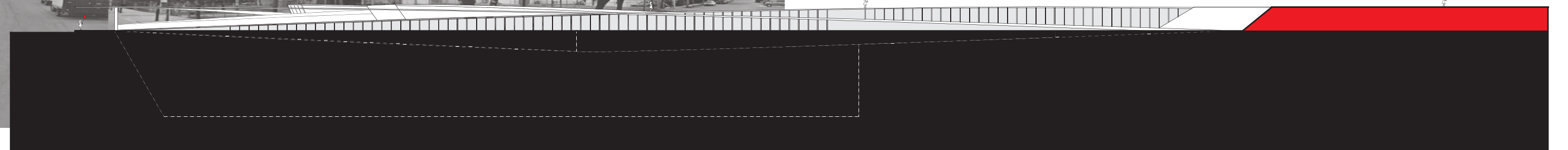
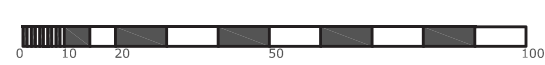




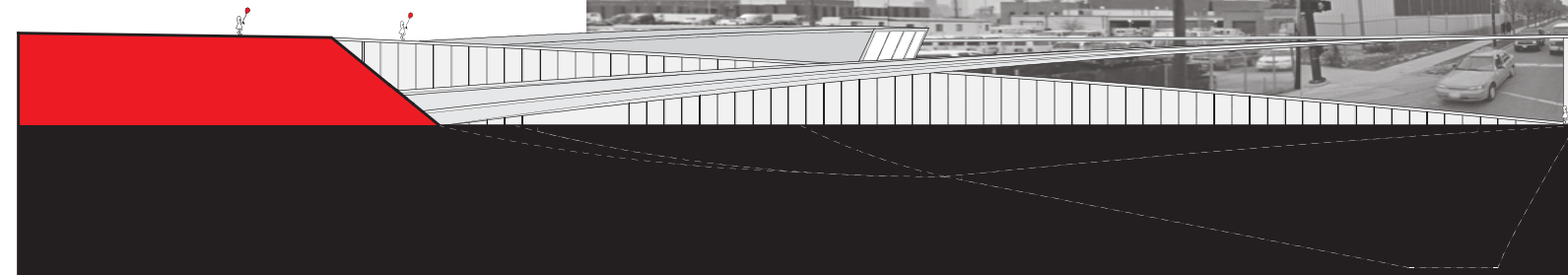
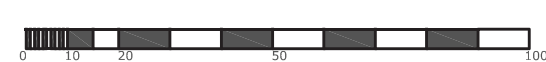
SOUTH ELEVATION



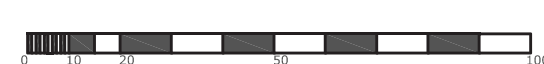
NORTH ELEVATION



ELEVATION LOOKING EAST

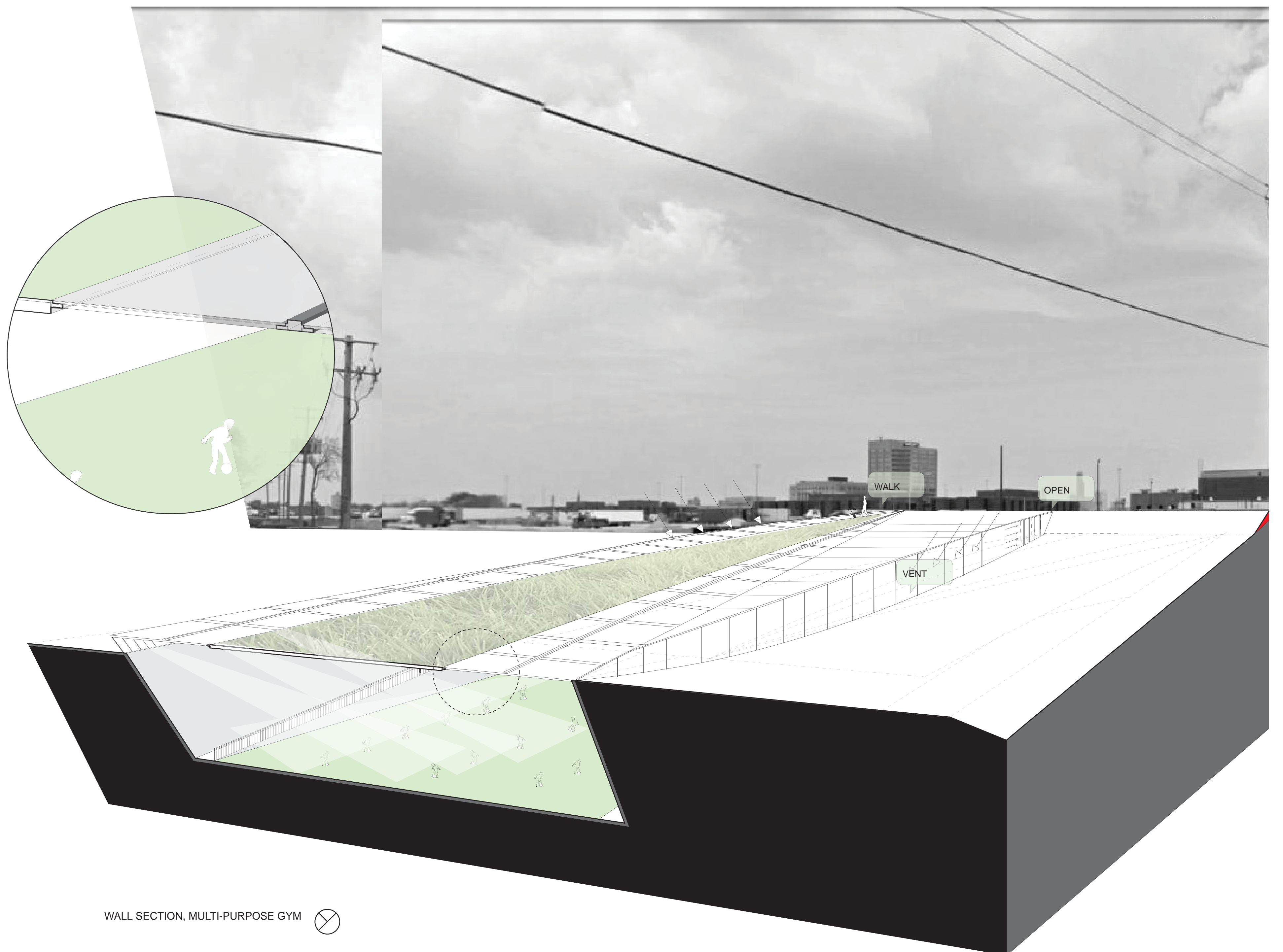
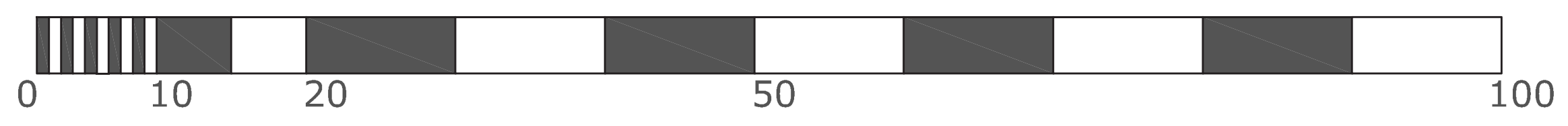


ELEVATION LOOKING WEST

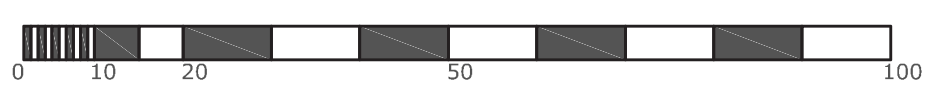


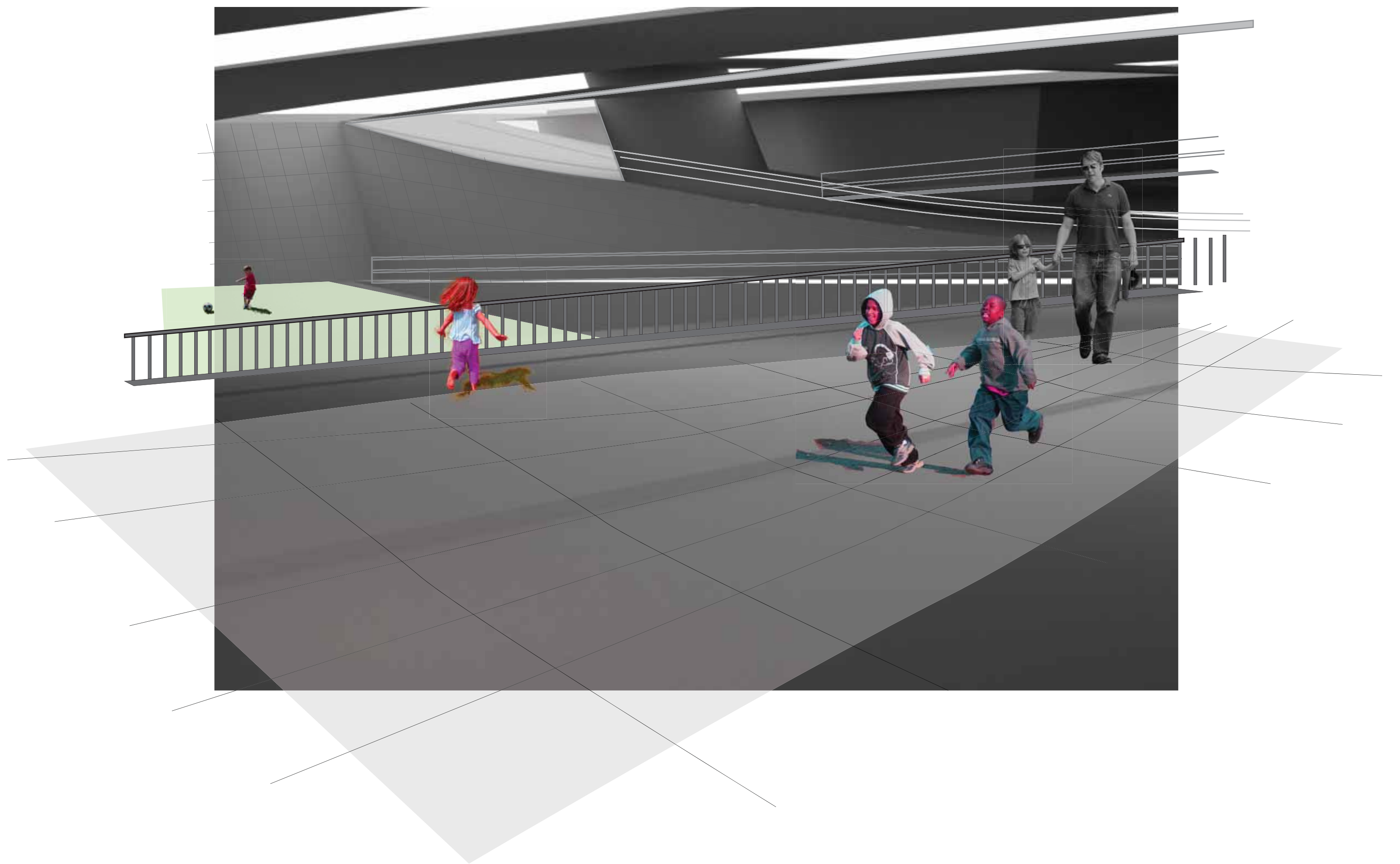


WALL SECTION OF MARKET LOOKING NORTH ⊕

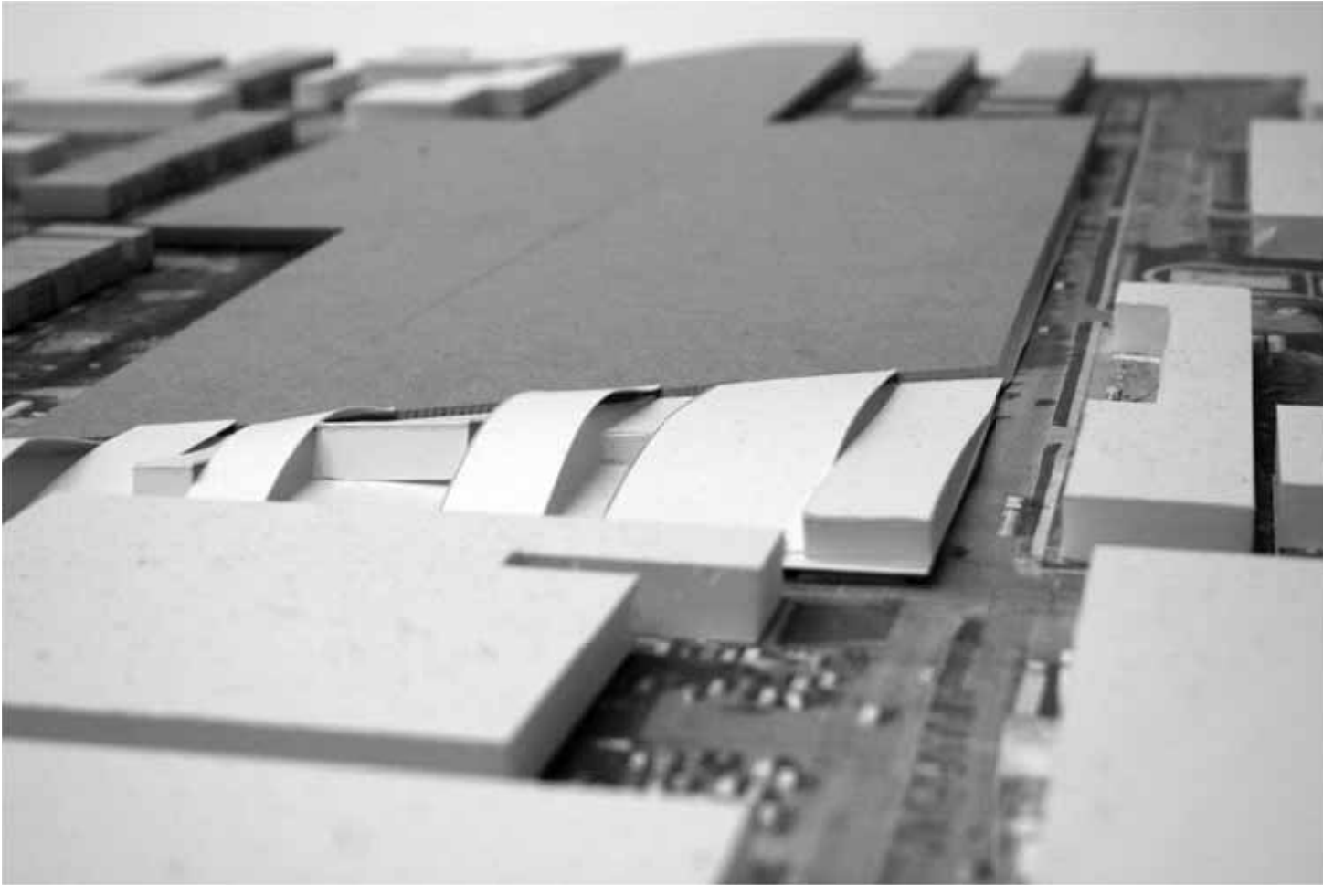


WALL SECTION, MULTI-PURPOSE GYM ⊗

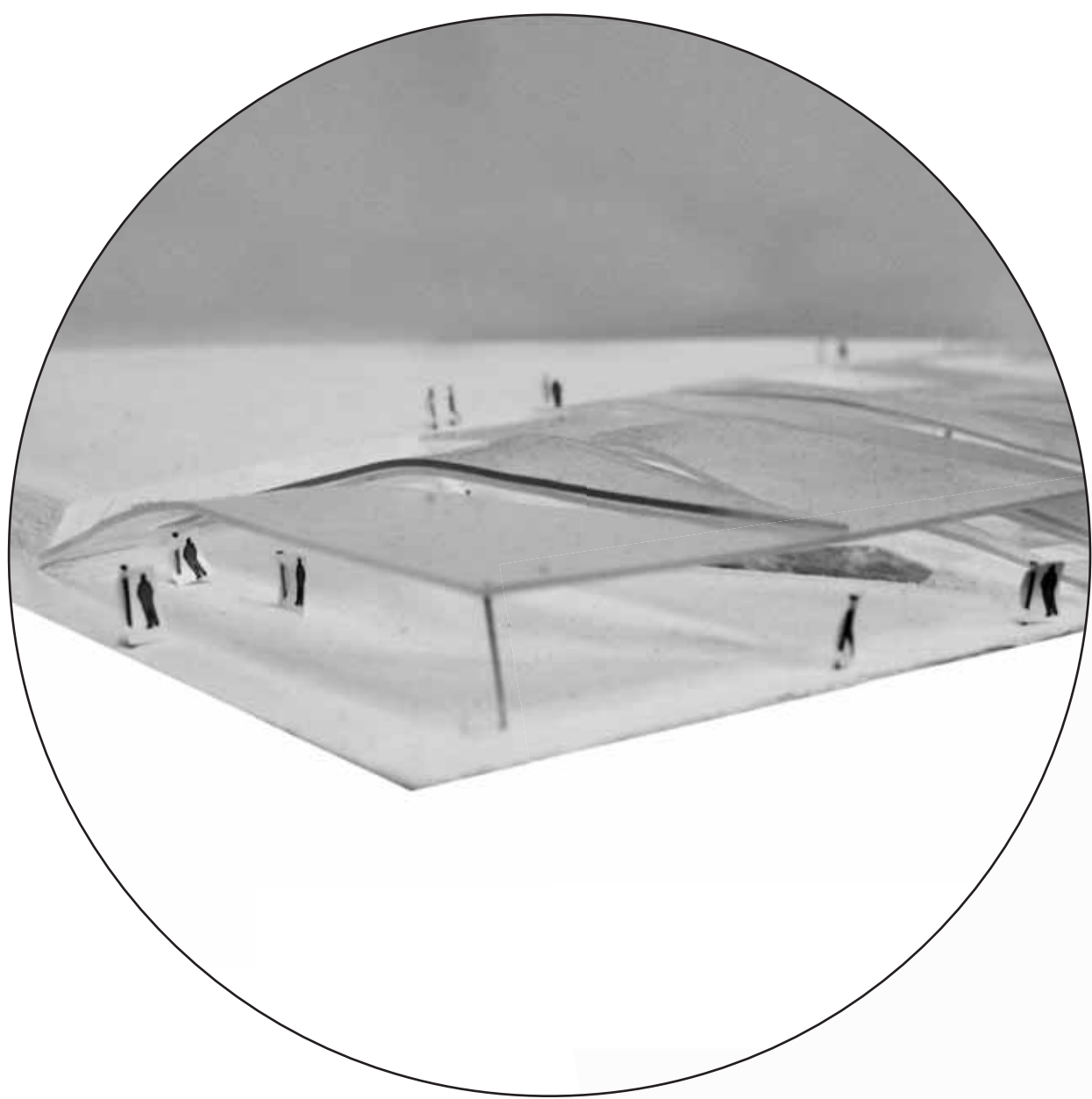
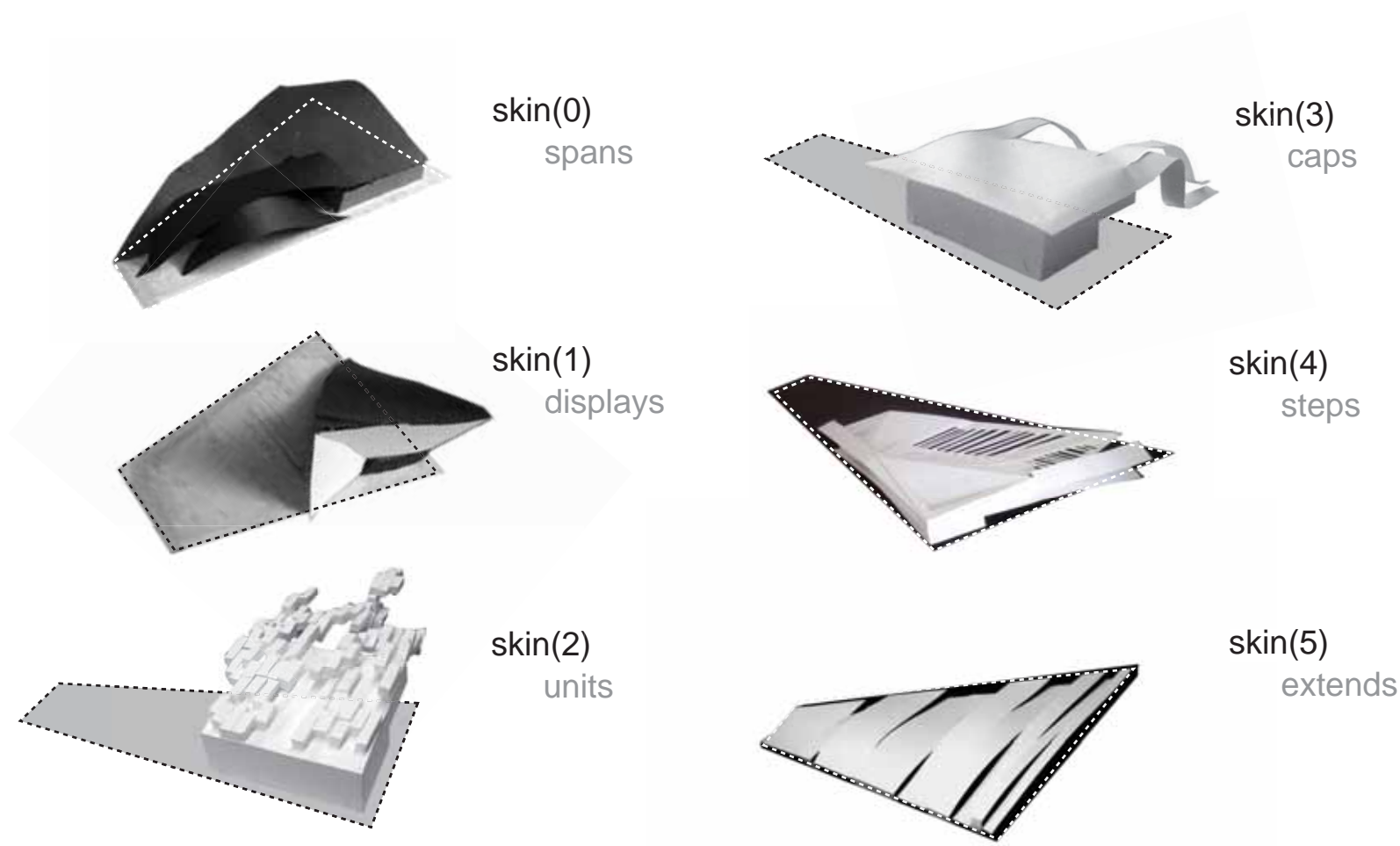




SITE MODEL



ITERATIONS



COMMUNITY CENTER MODEL

ANALYSIS OF ZONING AND EGRESS REQUIREMENTS to be addressed in design development

ITEM	ISSUE	CHAPTER/ARTICLE (CHICAGO/IL CODE)	Code Requirement	Actual	Required to Meet Code	REMARKS	RULES
ZONING REQUIREMENTS							
1.01	Zoning District	CZO Title 17	planned development	M2	POS		
1.02	Lot Area		planned development	125028 ft ²	not applicable	document actual	
1.04	Total Building Area		planned development	66842 ft ²	not applicable	document actual	
1.05	Building Height - No. of Floors	5(13-48-030)	planned development	16' above grade	not applicable	document actual	
1.08	Off Street Loading		planned development	A. (proposed on key plan)		identify on key plans	1 space (for buildings between 25,000 and 199,000 sqft)
1.09	Off Street Parking		planned development	B. (proposed on key plan)		identify on key plans	1 space for every 3 employees
BUILDING REQUIREMENTS							
2.01	Occupancy Classification (s)	3 (13-56) page 115	C-1 large assembly	C-1		(assumes more than 300 occupants)	
2.02	Maximum Occupancy	n. a.		2200 persons		document actual	
2.03	Type of Construction	6 (13-60) page 329		Type I (fire resistive)		document actual	
2.04	Plumbing: bathroom facilities	29 (18-29-403.1)	see table	Men: 60 Women: 60			
EXIT REQUIREMENTS							
3.01	Types of Exits			7 horizontal, 2 vertical		count by level and type (vertical, horizontal)	2 exits from each floor, minimum
3.02	Minimum Number of Exits	10(13-160-050)		55 units reqd, present on key plan		exterior only	40 persons/unit exit width; exit width=22"; min width: 36"
3.03	Travel Distance to Exits	10(13-160-140)	150 ft maximum	C. max. 123ft indicated on key plan (D.: add sprinkler system to long exit distances)		ground	
3.04	Capacity of Exits	10(13-160-210)		2208" present on key plan (61 exit units)		width	
3.05	Minimum Width of Exits	10(13-160-220)	36" minimum	indicated on key plan			
3.06	Swing of Exit Doors	10(13-160-250)	in direction of travel	indicated on key plan			
3.07	Hardware	10(13-160-260)	keyless in direction of travel	present			
3.08	Revolving Doors	10(13-160-270)	no more than 50% of required	N/A			requirement fits for outside exits
3.09	Landings	10(13-160-310)	max vertical rise: 9ft	proposed ramps requiring landings indicated on key plan (E. F. G. H. I. J)			
3.10	Handrails	10(13-160-450)	required for all stairs and ramps	present			required for all ramps greater than 1:10
3.12	Enclosures	10(13-160-370)	3 hour enclosure required	present			
VERTICAL CIRCULATION							
4.01	Changes in level, exterior			K. L. indicated on key plans		identify on key plans	
4.02	--accommodated by accessible ramp	IAC CH1 400.310.e	see rule	change in level less than 1:12 slope		show edge protection on presentation drawings	greater than 1:20, equal to or less than 1:12; max rise for any run: 30"; min width: 36"; landings: 60" long min
4.03	--accommodated by accessible elevator	IAC CH1 400.310.e	see illustration	change in level less than 1:12 slope			
4.04	Changes in level, interior	IAC CH1 400.310.e		indicated by arrows on key plan		identify on key plans	
4.05	--accommodated by accessible ramp	IAC CH1 400.310.e		present on key plan		show edge protection on presentation drawings	greater than 1:20, equal to or less than 1:12; max rise for any run: 30"; min width: 36"; landings: 60" long min
4.06	--accommodated by accessible elevator	IAC CH1 400.310.e	see illustration	M. N. proposed on key plan			
OTHER ACCESSIBILITY REQUIREMENTS Illinois Accessibility Code (IAC) - Public Facilities New Construction							
5.01	Bathroom stalls, total	IAC CH1 400.310.n1		Men: 30 Women: 30 (need 30 more for each gender)			whenever a toilet is provided, show at least one accessible facility
5.02	Accessible bathroom stalls		see illustration	O, P, Q, R, S, T, U, V (1 in each bathroom)		identify on key plans	
5.03	Accessible parking places		see illustration	proposed on key plan (W)		identify on key plans	1 space per 25; see illustration

- NOTES:
- 1 No fire code requirements included in this exercise
 - 2 The purpose of this matrix is to demonstrate student awareness of basic code requirements. Demonstrating the ability to apply these requirements in a design proposal is outside the scope of this design studio.
 - 3 Access the Chicaggo code at: <http://www.amlegal.com/library/il/chicago.shtml>



*REFER TO CODE MATRIX IN PREVIOUS PAGE

PROJECT INVENTORY
ARCH5120: skins studio
SPRING 2010

LABELS

concept	Provide mediation between park/toxic cap and people.
program	Serve two populations (adjacent neighborhood and Greater Chicago Area) by providing program which can connect both.
site	Obliterate awkward existing site section (produced via toxic cap)
form	Direct reaction to the cap, embed the building in the cap
envelope	Fake Landscape produced as a reaction to the already existing fake landscape
disciplinary genre/archive	OMA, Herzog and de Meuron, Bertrand Goldberg, BIG, Jun Aoki

REALIZED IN THE FINAL PROPOSAL?

GOALS

goal 1	Create a new, efficient and enjoyable landscape for the community	Yes
goal 2	Create unique programming which will attract as many people as possible to the community center	Yes. (could have been pushed further, more unique programming other than field house)
goal 3	Experiment with envelope as spectacle	Yes.

DESIGN RULES

volumes	Defined East to West by programming. Connected to cap North to South	Yes
horizontal surfaces	Interpolate between sidewalk and cap, walkable	Yes
vertical surfaces	Create operable envelopes, which can be transformed with requirements of program	Yes
openings	On the surface of bars, conceived in direct correlation between programming below. Between bars the envelope operates as needed by program.	Yes (needs to be pushed further, and articulated more clearly)
joints	Main joints are defined by connection to cap, or connection to sidewalk	Yes.
module or scaling device	Modules defined by programming requirements, existing sidewalk dimensions for pathways on envelope (for walking)	Could be changed with more careful articulation of materiality of envelope
material quality	As a response to the park and urban environment, the building materials are an artificial interpretation of the existing conditions.	Could be changed with more careful articulation of materiality of envelope

PROGRAM ORGANIZATION

circulation/access	The main entry gives access to program that serves Chicagoans, and then gradates to the periphery with program more specific to the neighborhood	Yes. (Change symmetric floor plan to reflect organic building)
primary relationships	Radiates outward from main entry (more public areas) and periphery (program serving neighborhood, more private areas)	Same as above
secondary relationships	Each program can be described as an action, starting at fast paced radiating outward to slow paced programs	Yes.
primary programs	Cafe/market, recreation	Yes.
secondary programs	Programs provided by envelope, walking, spectacle, relaxing	Yes.
relationship to form	The form is a direct reaction to main programmatic volumes, east to west defined by requirement, north to south defined by envelope program	Yes.

REVIEW SUMMARY: Sterk, English, Torrez, Lajeune, Pancoast, Reiter (reviewers)

successful aspects of the project	Interesting solution to pathological section of existing site
problematic aspects of the project	Material selection, structure have not been developed thoroughly
recommendations and revisions	Re-think material selection and articulation of envelope, develop realistic structure of building

SELF ASSESSMENT

most important accomplishment	Developing a strong architectural concept and idea as a solution to the existing problems of the site
most important 'failed' experiment	Materiality of envelope was not thoroughly resolved, needed more discipline and refinement